



Spark learning.





Promethean's Mission

At Promethean, we are committed to unleashing human potential by revolutionizing the way the world learns and collaborates, making all of us more engaged, empowered and successful. We are driven by the core belief that learning never ends.

Our Education Themes That Matter



Education is the fuel that drives social progress and economic growth. We believe education generates opportunity, creating stronger and more informed societies, more competitive businesses and healthier, more productive economies. At Promethean, we take a broad view of the key drivers of change and the **Themes That Matter** in global education that, when combined, support teachers, schools and systems and impact positive change, no matter the current stage of deployment of technology within that system.

Teacher Effectiveness addresses how the learning day and the job of “teacher” have changed and acknowledges that educators will need new tools and new skills to make the most of their time and energy.

Curriculum Development surveys the way the face and content of learning is evolving—especially in critical areas like science, technology and math.

Curriculum & Assessment Assets is the meaningful integration of assessment within the context of learning as new curriculum architectures linking content and assessment are developed.

Data-Driven Decision Making examines how educators capture meaningful data about learning and use it to improve individual—and system-wide—performance.

Student Achievement focuses on how we accelerate and deepen student understanding and considers how technology creates meaningful personalization and collaboration.

Education Continuum explores how technology supports education success beyond schooling, into the workplace and into the fabric of our modern lives.

These themes are directly related to the trends and challenges experienced in schools everywhere, and hint at what educators are seeking—the right content, to the right student, for the right reason, at the right time with the ability to measure its efficacy and report results in a concise, meaningful and actionable manner.

At Promethean, our work supports this new vision for education.

Promethean's Education Transformation Framework



We understand that a one-size-fits-all approach simply does not work in education. Collaborating with educators, we implement a unique, three-step approach to develop an effective and appropriate Education Transformation Framework.

Here's how it works:

1

Orientation: We learn what's happening in schools through a full evaluation and needs analysis:

- What works?
- What's challenging?
- What's keeping the education experience from being as effective as it could be?

2

Exploration: Using information from orientation phase, we create a prototype solution and then create the blueprint to apply it to every unique system. Working with leading industry partners, we pull together the right combination of technology, content, training and support for the schools.

3

Consolidation: Finally, we analyze the variables and provide plans of scale and implementation that are cost-effective over the long term for the school system.



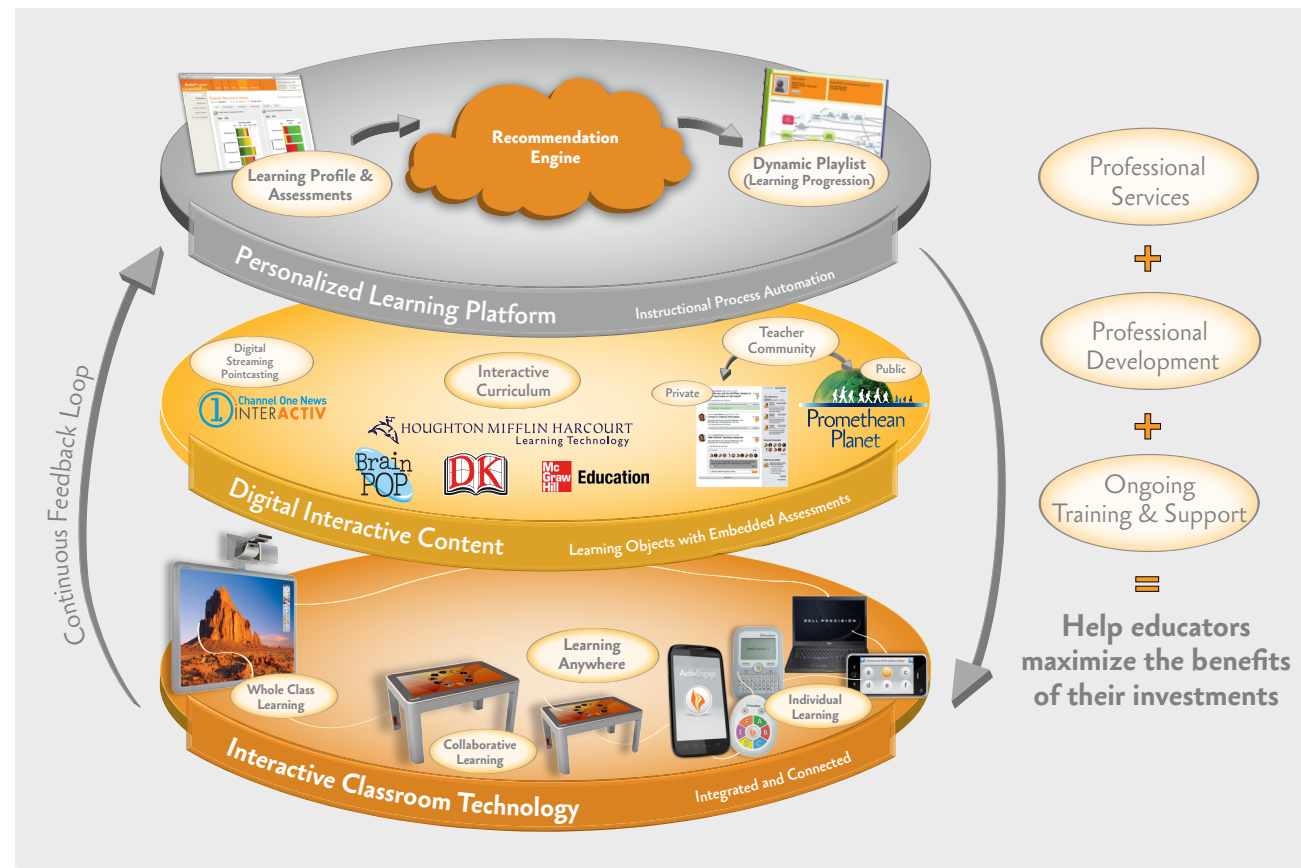
Promethean's Education Ecosystem

A flexible and integrated instructional delivery model designed to improve student outcomes

Interactive Classroom Technology provides the foundation for innovation. From Learner Response Systems, laptops and tablets to interactive whiteboards and multi-touch collaborative tables, interactive technology creates a critical portal to the digital world. Here, sound pedagogical practice in the digital age is possible for all learning environments—from whole class to individual or collaborative learning, to learning anywhere.

Digital Interactive Content transforms the way teachers teach and learners learn. We partner with the world's leading education publishers to blend the content educators know and love with the power of interactivity to offer the highest standards of resources and curriculum-aligned activities for the classroom. Embedded assessment tools enable educators to optimize a student's individual learning progression. Through the world's largest interactive whiteboard community, Promethean Planet, teachers share and access supplemental content, ideas, insights and best practices to make learning more efficient and effective.

Personalized Learning Platform empowers educators with tools to aggregate, disaggregate and analyze real-time data from classrooms, supporting data-driven decision making that can improve educational outcomes—from an individual student, classroom or school, up through an entire education system. Communication tools within this platform keep everyone abreast of a student's achievement and empower teachers with information to deliver personalized instruction mapped to an individual's progress and learning goals.



At the heart of this model are sound, research-based practices, professional development and ongoing training and support to help educators maximize the benefits of their investments.



Enhanced Learning Environments

At the core of our vision for education is an Enhanced Learning Environment that serves the needs of all stakeholders— administrators know immediately what's working and what's not, teachers are empowered to deliver truly personalized instruction, students are inspired and fully engaged and parents are involved and informed.

An Enhanced Learning Environment ensures that the right content is delivered to the right student, for the right reason, at the right time, with the ability to measure its efficacy and to report results in a concise, meaningful and actionable manner.

Our Solutions

Whole Class Learning Solution—Empowers teachers to provide effective instruction simultaneously to a wide range of students, engaging the whole class while respecting the unique needs of individual students.

Collaborative Learning Solution—Encourages project-based activities where students interact and collaborate fostering the intellectual synergy of many minds sharing knowledge and working towards a common goal together.

Personalized Learning Solution—Provides an interactive, integrated assessment system, enabling educators to evaluate student knowledge and tailor instruction to address the diverse needs of individuals.

Learning Anywhere Solution—Offers the freedom to easily broaden access to interactive collaborative content, resources and training in order to meet the needs of today's students and teachers.

Our Products

Interactive Displays

ActivBoard Systems

Each student, teacher, school and classroom is unique. Promethean ActivBoard Systems are industry-leading, all-in-one solutions available in a wide variety of configurations, empowering you to tailor the right solution to accommodate your needs. Designed for optimum flexibility, ActivBoard Systems offer a range of interactive whiteboard sizes, mounting options and models, including multi-touch and multi-pen, plus a choice of projectors and easy upgrades for multimedia sound and wireless connectivity. ActivBoard Systems are powered by Promethean's award-winning ActivInspire software, providing all of the tools teachers need to transform ordinary classrooms into engaging, effective learning environments. Systems are backed by the Promethean Projector Promise, lowering the total cost of ownership over time.



ActivTable

The ActivTable, with its 46-inch HD LCD touch sensitive display, is an interactive table designed to facilitate collaborative learning and problem solving activities, while empowering teachers to differentiate instruction based on the needs of individual learners. A dynamic learning environment that builds important 21st Century skills such as communication and critical thinking, the ActivTable encourages students to lead their own learning with inclusive activities that drive creativity and consensus decision making. Designed to engage up to six students at one time, the ActivTable offers flexible opportunities for collaboration, from small group learning to special needs and whole class activities.



ActivPanel

The ActivPanel, an ideal solution for leading engaging presentations and collaborative small group activities, duplicates the functionality of an interactive whiteboard, only in a smaller format.



Learner Response Systems

ActivEngage

Gain instant insight into student comprehension and progress with an intuitive, integrated assessment application that streamlines instructional management. Promethean ActivEngage is a software-based Learner Response System, ideal for use in schools with 1:1 laptop, tablet or BYOD programs, computer labs and mixed technology scenarios. The application maximizes current technology investments by enabling students to use existing laptops, desktop computers, tablets, smartphones or Promethean ActivExpression devices to answer questions with a range of response types, and empowers teachers to formatively assess performance with real-time reporting. Designed to grow with you, Promethean ActivEngage enables virtual voting across a single classroom, an entire school, and beyond.



ActivExpression

ActivExpression is a versatile student response system with full sentence and character texting options, offering students a range of response types as vast and dynamic as the ideas they are eager to convey. Featuring a backlit, high-resolution LCD screen and a QWERTY keyboard, ActivExpression resembles a smartphone, creating instant familiarity and usability and promoting student engagement, participation and collaboration during lessons. Seamless integration with ActivProgress encourages ongoing, real-time assessment of student progress, enabling teachers to identify student achievement trends and proactively address potential challenges before they become ongoing academic issues.



ActiVote

With A–F voting capability and a classroom-tough design, ActiVote is a hand-held wireless Learner Response System that makes whole-class participation fun, exciting and easy for students of all ages.



ActiView

Any object placed under the ActiView Visual Presenter's gooseneck-mounted lens and lamp combination instantly becomes an interactive teaching tool displayed in vivid detail. Examine the smallest shell with automatic zoom and focus. Capture still frames or a video of the fluid motion of waving butterfly wings, then save it to a computer for further investigation. Seamless integration with ActivInspire software allows you to quickly and easily transform images and video into interactive lesson content that can be displayed and annotated over instantly or saved for future editing and sharing.



ActivSlate

ActivSlate is a wireless, fully integrated, notebook-sized tablet that offers the same interactive functionality as the ActivBoard, but can be used from anywhere in the classroom. The ActivSlate enhances teachers' ability to deliver truly interactive, engaging lessons, while providing the freedom to instruct from student desks, stimulate debates from the four corners of the room and direct lessons during group projects. ActivSlate uses the same ActivPen as our ActivBoard, is small enough to sit on a student desk and is light enough to be passed around, giving anyone the ability to control the ActivBoard from anywhere in the classroom.



ActivSound

With Promethean's ActivSound solutions, students focus on understanding the lesson rather than straining to hear it. ActivSound is available in a versatile range of configurations to meet different room layouts, district budgets and installation requirements. Flexible options include in-classroom audio enhancement solutions featuring cutting-edge infrared amplifier technology, Wall-Mounted or Ceiling-Mounted Speakers and a wireless Teacher Microphone, as well as a portable audio enhancement solution that enables rich listening experiences in the smallest, most remote and temporary of learning environments. Our family of ActivSound accessories enables you to mix and match speakers and microphones to create optimal audio conditions.



ActivTablet

The ActivTablet is a portable, pen-driven interface that simplifies lesson planning by offering the lesson-building features of ActivInspire on the go.



ActivWand

The ActivWand offers the same functionality as the ActivPen plus twenty-one inches of reach, ensuring students of all sizes and abilities can experience the magic of interactive learning on the ActivBoard.



ActivRemote

Use ActivRemote to control the ActivBoard, lead Learner Response System voting sessions, advance presentation slides, open applications or web browsers and perform any other software or web browser function that can be made with keyboard shortcuts.



ActivArena

ActivArena, standard on most ActivBoard Systems, enables collaboration in the classroom by allowing two users the ability to interact simultaneously anywhere on the ActivBoard with ActivPens or ActivWands. In addition, ActivArena works interchangeably with touch capability on ActivBoard 500 Series whiteboards.



Our Products

[Continued]

Interactive Content & Resources

Promethean Planet

Promethean Planet is one of the world's largest online communities of educators where teachers from all over the globe connect to share free resources and access premium interactive lesson content and a wide variety of professional development materials. Available in 15 language versions, with over 1.3 million members in more than 150 countries, Promethean Planet is the international meeting place for educators in the 21st century classroom. Planet's vast collection of downloadable teacher resources and online professional development courses offer teachers everything they need to easily create more active, inspired and engaged classrooms. Created by teachers, for teachers, Promethean Planet is a unique community where educators converge to share, connect and collaborate—all in the spirit of creating inspiring interactive learning environments.



Promethean Math InterActiv Promethean Reading InterActiv



HOUGHTON MIFFLIN HARCOURT
Learning Technology

An exciting collaboration between Houghton Mifflin Harcourt and Promethean brings educators and students two **complete sets of interactive whiteboard lessons to supplement any Math or Reading** curriculum. Built from the ground up around the Common Core Standards and engineered for use on any interactive surface, these engaging lessons blend the elements of Houghton Mifflin Harcourt's trusted *GO Math!* (K-6), *On Core Mathematics* (6-11), and *Journeys Reading* (K-6) textbook series with effective **interactive teaching tools**, integrated **formative assessment** and comprehensive teacher guides. These engaging interactive lessons fill the gaps between existing curricula and **the new Common Core State Standards for Mathematics and English Language Arts**.



Channel One InterActiv

Channel One News InterActiv supports Common Core curriculum and **parental involvement** through a powerful learning platform that combines interactive whiteboard technology with Promethean Learner Response Systems and Channel One's award-winning daily current events programming. Designed to engage students and empower teachers and parents, this solution brings real-world stories to life with daily broadcasts that blend interactive news, technology, digital content across all subject areas and professional development. With the integration of **formative assessment** tools and **Common Core Standards**-aligned interactive whiteboard content, students truly become active participants in the daily news broadcast.



Publisher Created Resources

Promethean partners with some of the world's leading education publishers, blending the content you know and love with the power of interactivity. This offers the highest standards of resources and curriculum-aligned activities for your classroom. Promethean's Publisher Created Resources offer ready-made lessons including a variety of downloadable timesaving content, to enable teachers to easily create dynamic interactive lessons for students of all ages and learning levels.



Interactive Software

ActivInspire

Promethean's award-winning software, ActivInspire, enables teachers to create differentiated lessons filled with rich, powerful activities that encourage the whole class to focus on what is important—learning. ActivInspire integrates with Promethean's award-winning Learner Response Systems and includes templates and activities specifically designed to enhance the ActivBoard's Dual-User functionality, empowering teachers to support collaborative learning and ongoing assessment in the classroom. With access to premium content including assessment templates and unlimited visual and auditory resources, ActivInspire provides a foundation to build engaging, effective lessons in a fraction of the time.



Promethean ActivOffice

Promethean ActivOffice is a software plug-in that incorporates the collaborative, interactive features of Promethean's ActivInspire into PowerPoint® slide shows to create engaging presentations. Promethean ActivOffice tools are embedded into the Microsoft Office™ menu to provide a wide range of interactive functionality, from basic slide annotations to advanced opportunities for assessment with Promethean's Learner Response Systems. With Promethean ActivOffice's integrated, interactive tools and a wealth of teaching resources at your disposal on Promethean Planet, you have all the tools you need to evolve PowerPoint® slides into personalized, collaborative lessons.



Curriculum and Assessment Management

ActivProgress

ActivProgress, Promethean's Curriculum and Assessment Management system, optimizes the learning environment for all students by providing a strong directional focus for educators to facilitate the design, delivery and assessment of standards-based curriculum. A web-based data management and social learning solution that is fully integrated with our Learner Response Systems, ActivProgress combines real time assessment and reporting to enable data-driven decisions and personalized instruction in the classroom. The platform connects multiple sources of information to compile actionable data with the added benefit of a powerful social collaborative space that streamlines communication. Monitor student progress in real time and instantly deliver targeted, personalized instruction that has a lasting impact on every learner.



Training & Support

Promethean Academy

Promethean Academy offers a flexible Professional Development program designed to help educators unite their curriculum and teaching styles with Promethean's interactive and integrated solutions. Featuring a wide range of training options, including face-to-face workshops and flexible online courses, the Promethean Academy offers courses in everything from getting started with ActivInspire, to achieving optimal results when implementing Promethean solutions in your school, and additional workshops supporting **English Language Learners**, **Special Education** and **Multi-Tiered Instruction**. With a focus on creativity, connectivity and in-depth comprehension, Promethean Academy courses are much like an interactive lesson—exciting, engaging, integrated and flexible.



Promethean ActivCare Warranty and Projector Promise

We understand the importance of providing quality service and support and are committed to ensuring that our customers achieve exceptional results with Promethean solutions. Designed to maximize productivity and efficiency of the interactive classroom, Promethean's comprehensive ActivCare warranty and support services enable educators to focus on what truly matters - teaching. With a range of options available, customers can select the warranty that meets their unique needs. The Promethean Projector Promise is an extension of our commitment to customers, offering replacement projectors and lamps at preferential pricing, lowering the total cost of ownership of Promethean ActivBoard Systems.



We are here to help you discover the Promethean solution that is right for you.

To learn more:

Visit: www.PrometheanWorld.com

Call: (08) 7225 7432

Email: enquiries@interactiveitgroup.com.au

Your Premier Promethean Business Partner &
Promethean Academy
Interactive IT Group
Suite 3, 224 Glen Osmond Road
Fullarton SA 5063

