



Introducing

CLASSFLOW™

INCREASE THE IMPACT OF TEACHING AND LEARNING DELIVERY

The key to improving student learning lies primarily in the manner in which the teacher is able to share knowledge while increasing the overall level of student engagement.

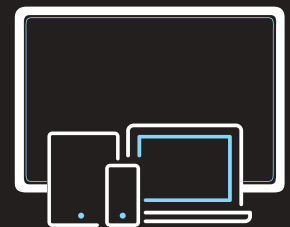


HOW CAN SCHOOLS USE TECHNOLOGY TO IMPROVE TEACHING AND LEARNING OUTCOMES?

1. Ensure the active participation & engagement of every student



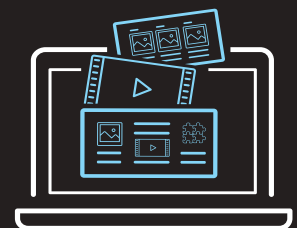
2. Enable the flow of dynamic, interactive content across multiple devices to create a collaborative learning environment



3. Measure student comprehension in the moment of learning



4. Provide differentiated instruction to groups & individual students



5. Extend learning beyond the classroom



A photograph of three students in a classroom. On the left, a young man with dark hair and a red shirt looks intently at a tablet. In the center, a young woman with blonde hair and a blue patterned shirt has a wide, joyful smile. On the right, a young woman with dark hair and a red shirt is also smiling and looking at the tablet. The background is a blurred classroom setting.

THE SOLUTION IS CLASSFLOW

ClassFlow is a comprehensive teaching and learning system that increases the depth of student and teacher engagement by providing interactive and collaborative use of classroom devices, digital curriculum and assessments for learning.

HIGH IMPACT LESSON DELIVERY

- ▶ Breathe Real Purpose Into Today's Learning Technologies
- ▶ Deliver Dynamic & Engaging Instruction
- ▶ Measure Student Learning & Differentiate Instruction
- ▶ Simplify Lesson Planning

BREATHE REAL PURPOSE INTO TODAY'S LEARNING TECHNOLOGIES

Enhance learning outcomes afforded by 1:1, BYOD and student laptop devices by providing holistic use in the classroom.

SYNCHRONISE ALL CLASSROOM DEVICES

Connect all teacher, student and classroom devices including Chromebook™ notebook computers, laptops, tablets, interactive whiteboards, flat panel displays and projectors.

ACCESS RESOURCES FROM ANY WEB BROWSER

Compatible with iOS®, Android™ platform and Windows® operating systems.



DELIVER DYNAMIC & ENGAGING LESSONS

Enable the dynamic flow of interactive content across a collaborative learning environment.

SHARE INTERACTIVE MULTIMEDIA CONTENT

Present interactive lesson materials such as videos, images, audio files and digital content across all connected student devices.

FOSTER WHOLE-CLASS PARTICIPATION & COLLABORATION

Engage every student and create a collaborative learning environment by enabling the flow of content between teacher and student devices.

MOVE FREELY THROUGHOUT YOUR CLASSROOM

Deliver lessons from anywhere in the classroom using your tablet or smartphone.





MEASURE STUDENT LEARNING & DIFFERENTIATE LESSON CONTENT

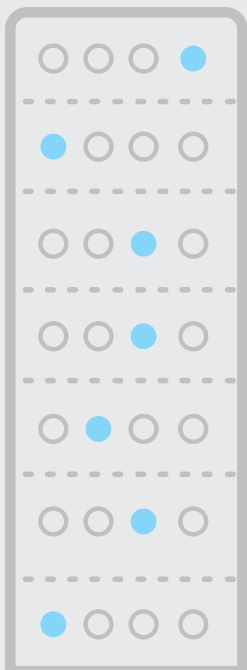
Receive real-time insight into student progress through rich interactive and differentiated formative assessment.

ASSESS STUDENT COMPREHENSION IN THE MOMENT OF LEARNING

Receive actionable real-time feedback on student progress in the moment of learning via the live assessment screen and save the data for future use.

EXPAND & CUSTOMISE ASSESSMENTS

Assess student learning through a broad range of interactive question types, including text, multiple choice, Likert scale, equation, true/false, sort & order and open-ended responses using multimedia content.



PROVIDE SUPPORT WHERE AND WHEN IT IS NEEDED

Use the data collected via a diverse set of formative assessments and digital portfolio items to provide a deep, rich view of student strengths and needs.



ADMINISTER SELF-PACED TESTS

Assign leveled assessments that can be completed by each student at his or her own pace.



PERSONALISE INSTRUCTION

Organise students into learning groups and send customised lesson content to individual student devices while also delivering interactive whole-group instructional material.



SIMPLIFY LESSON PLANNING

Create dynamic interactive lessons using existing content from any source or file format.

TURN EXISTING DIGITAL CONTENT INTO INTERACTIVE LESSON MATERIAL

Use ClassFlow Desktop to deliver content from any application to student devices, annotate for whole group discussions and administer in-the-moment polls or assessments.

ORGANISE LESSON MATERIALS IN THE CLOUD

ClassFlow Drive provides a single cloud-based account for anytime, anywhere access to create and manage all assignments, assessments and digital resources.

INTEGRATE LESSON CONTENT FROM ANYWHERE

Through ClassFlow's built-in search engine, search for & import any lesson file, such as PDFs, documents in Microsoft® Word & PowerPoint® presentation manager, video or image files, SMART Notebook® files, & Promethean ActivInspire Flipcharts, from multiple sources, including Google Drive™, OneDrive®, Dropbox®, ClassFlow Drive, external & local drives and the internet.

LEARNING BEYOND THE CLASSROOM

- Implement Anytime, Anywhere Learning
- Central Point of Information for Class Management & Administration



A person with dark hair, wearing a blue long-sleeved sweater, is seen from the side, looking out of a window. The window has white frames and multiple panes. The background outside the window is dark, suggesting it might be nighttime. The person is standing on a patterned rug in front of the window.

IMPLEMENT ANYTIME, ANYWHERE LEARNING

Instill in students lifelong learning and independent problem-solving skills through student-centred learning models and tools.

SUPPORT BLENDED LEARNING

Enhance student engagement by assigning pre- and post-instruction assignments for in or out of classroom work.

TRACK ASSIGNMENTS

Monitor individual student progress by accessing real-time status of outstanding assessments and assignments.

ORGANISE STUDENT RESOURCES

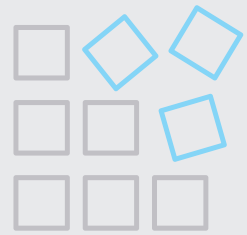
Provide students with a dedicated digital storage space to upload and organise their own learning resources and materials for reference.

EXTEND COMMUNICATION & COLLABORATION

Give students a social platform to discuss homework and topics from the classroom through the two-way comments stream.

CENTRAL DESTINATION FOR CLASS MANAGEMENT & ADMINISTRATION

The ClassFlow Teacher & Student Dashboards provide instant access to the most important classroom information, all in one place, anytime and anywhere.



MONITOR STUDENT PERFORMANCE

Generate and view a visual representation of whole-class assessment performance.

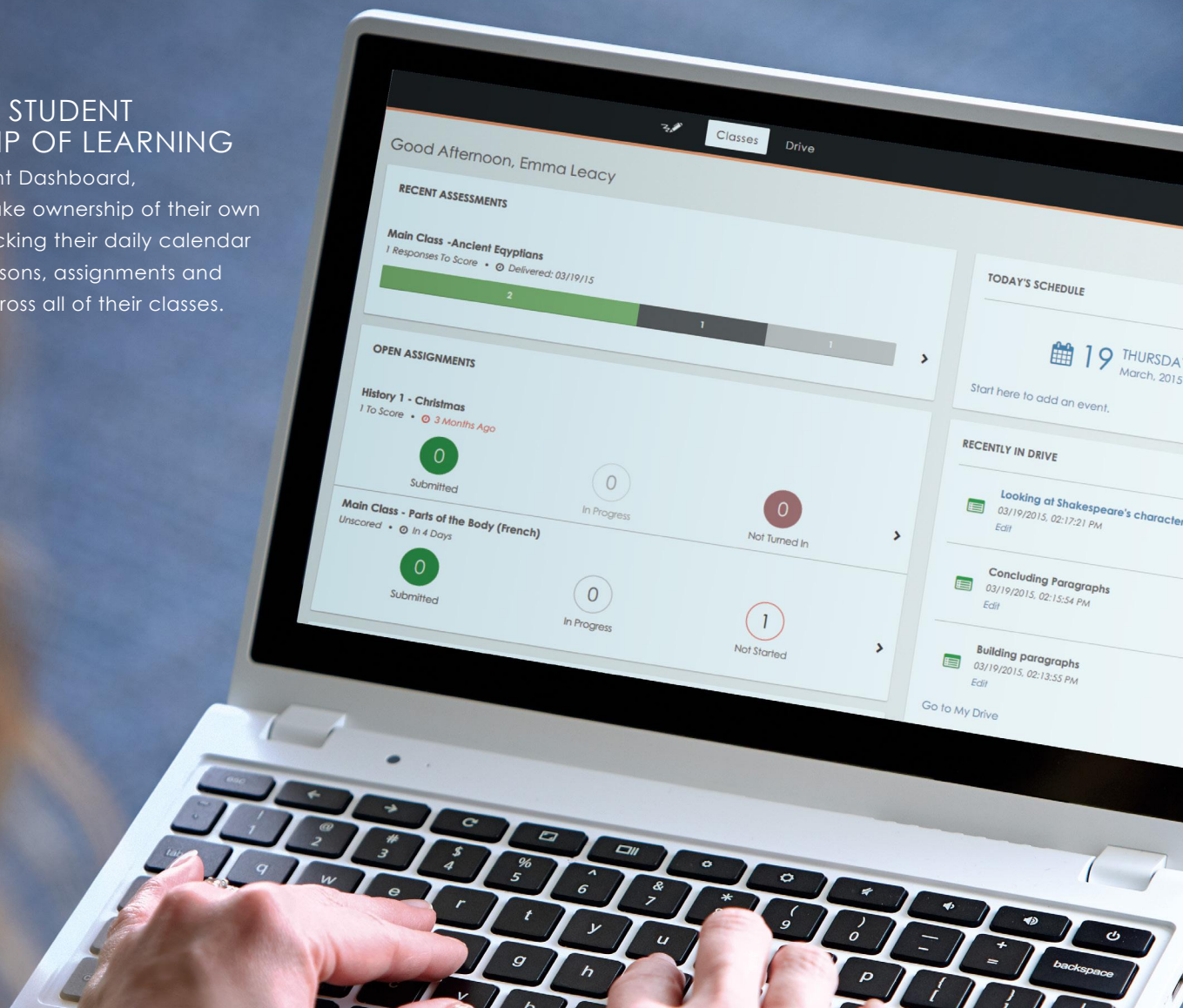


CENTRALISE CLASS INFORMATION & NOTIFICATIONS

Post announcements, send messages, view assignments and communicate with students outside the classroom via the Teacher Dashboard and Class Homepage.

EMPOWER STUDENT OWNERSHIP OF LEARNING

With the Student Dashboard, students can take ownership of their own learning by tracking their daily calendar of activities, lessons, assignments and assessments across all of their classes.





CLASSFLOW™

Designed by Promethean

Promethean is trusted by over 2 million teachers around the world as a global leader in the development of award-winning classroom technology solutions. Promethean's mission is to improve education by partnering with teachers to create the dynamic connected learning environments that motivate students to learn.



Contact your local Promethean Representative at UK.customerconnection@PrometheanWorld.com or visit www.PrometheanWorld.com. Join the movement at www.ClassFlow.com.

Google Drive, Chromebook and Android are trademarks of Google Inc. Windows, OneDrive, Microsoft and PowerPoint are either trademarks or registered trademarks of Microsoft Corporation in the United States and/or other countries. SMART Board and SMART Notebook are trademarks or registered trademarks of SMART Technologies ULC in the United States and/or other countries. iOS is a trademark or registered trademark of Cisco in the U.S. and other countries and is under license to Apple Inc. Dropbox is a trademark or registered trademark of DropBox, Inc. ClassFlow is not affiliated with or otherwise sponsored by Dropbox, Inc.